

LONKING

Efficiency Rules the Future



CDM855F WHEEL LOADER

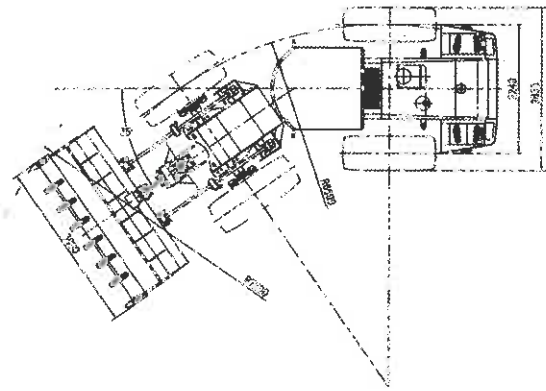
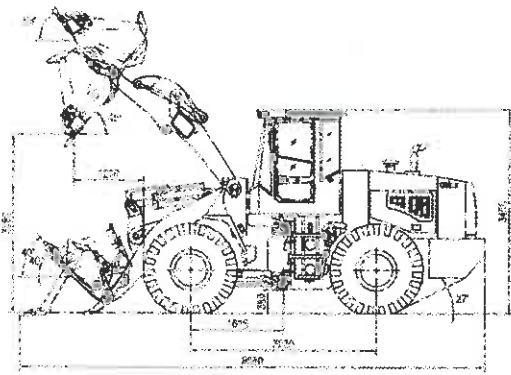
Powerful Weichai Engine
Pilot Control System
Automatic Leveling
Convenient Maintenance

CDM

Load Right
Load More *Smile*

**30,000 UNITS SOLD
WORLDWIDE IN 2008**

■ RATED POWER:	162kw/2200rpm
■ BUCKET CAPACITY:	3m ³
■ RATED PAYLOAD:	5000kg
■ OPERATING WEIGHT:	17700kg



Overall Data

Bucket Capacity (m ³)	3			
Rated Payload(kg)	5000			
Operating Weight(kg)	17700±300			
Traction Force(kN)	155±3			
Breakout Force(kN)	170±3			
Travel speeds (km/h):	I	II	III	IV
	Forward	11.5	36.0	
Reverse	16.0			

Engine

WEICHAI WD10G220

Rated Power(kw/rpm)	162/2200
Peak Torque(Nm/rpm)	850/1400
Starting Voltage(V)	24

Drive Train

Torque Converter	Single-stage, Duo-turbine, 4-elements
Torque Ratio	4.0
Transmission	Planetary Powershift Transmission
Gear	2F/1R
Pressure of Transmission(MPa)	1.2~1.5
Main Reducer	Spiral bevel, 1-stage Reduction
Final Reducer	Planetary Reduction
Tire	23.5-25 L-3 16PR

Brake System

Service Brake	Single Circuit Caliper, Dry Brake
Setting Pressure (MPa)	0.78
Parking Brake	Air Actuated Caliper Brake
Emergency Brake	Air Actuated Caliper Brake

Standard

Optional

Automatic Leveling	Log Fork(J)
Lonking Transmission	Coal Bucket (M)
Lonking Axle	Side Dump (C)
Standard Bucket	Rock Bucket (K)

Pilot Control

Steering System

Type	Hydraulic Load Sensing
Cylinders-bore×Stroke(mm)	2-100×324
Steering Pump	Gear Pump
System Pressure(MPa)	16
Flowrate(L/min/RPM)	176/2200
Steering Angle	±35°

Hydraulic System

Lift Cylinders-bore×Stroke(mm)	2-180×836
Tilt Cylinder-bore×Stroke(mm)	1-200×559
Model of Implement Pump	Gear Pump
Flowrate(L/min/RPM)	220/2200
System Pressure(MPa)	16
Pilot Control System Pressure(MPa)	2.5

Hydraulic cycle time, rated load in bucket(in second):

Raise(Loaded)	Dump	Lower(Empty)	Total
6.0	1.0	4.0	11.0

Electrical System

System Voltage(V)	24
Battery (2 in series)(Ah)	120
Lamp Voltage(V)	24

Service Refill Capacity

Fuel Tank(L)	285
Hydraulic Tank(L)	285
Crankshaft(L)	20
Transmission(L)	45
Front Axle(L) /Rear Axle(L)	23/23

Air Conditioning System

Heating Capacity(W)	5800 (±10%)
Cooling Capacity(W)	4500 (±10%)

INTERNATIONAL SALES COMPANY LONKING HOLDINGS LIMITED

Add:26 Minyi Road,Xinqiao,Songjiang Industrial Zone,Shanghai

Tel:+86-21-37602205

Fax:+86-21-57687966-8436

http://www.lonking.cn

P.C:201612

E-mail: export@lonking.cn

trade@lonking.cn

For more information on Lonking CDM products, please visit

www.lonking.cn



Sole Agent And Distributor
SUNWAY ENTERPRISE (1988) SDN. BHD.
(62711-M)
Lot 656, Jalan Subang 1, Off Persiaran Subang,
47600 Subang Jaya, Selangor Darul Ehsan, Malaysia.
Tel: 603-5633 1909 Service hotline: 603-5632 9349
Fax: 603-5633 1908